

TRAILMASTER®

Data Analysis Accessory

TM StatPack Software/Cable™

Data Analysis Package

Includes:
 TM Stat Pack Software
 TM Stat Pack Cable (RS232 - 9 and 25 pin)

Features:
 NEW! Catalog Function
 Menu-driven Operation Screen (when used with TM DataCollector II)

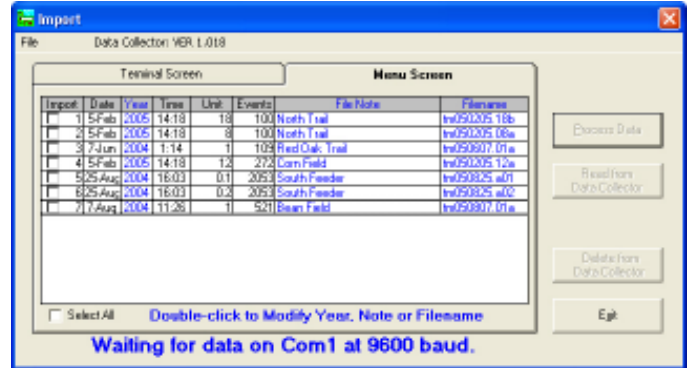
Windows (98; NT; 2000; ME; XP) • NEW! Catalog Function • Prints data in list form or as bar graph • Link photos to events

The TRAILMASTER TM STATPACK Software can be used with the TM DATA COLLECTOR II or with individual TRAILMASTER monitors to print out and analyze event data.

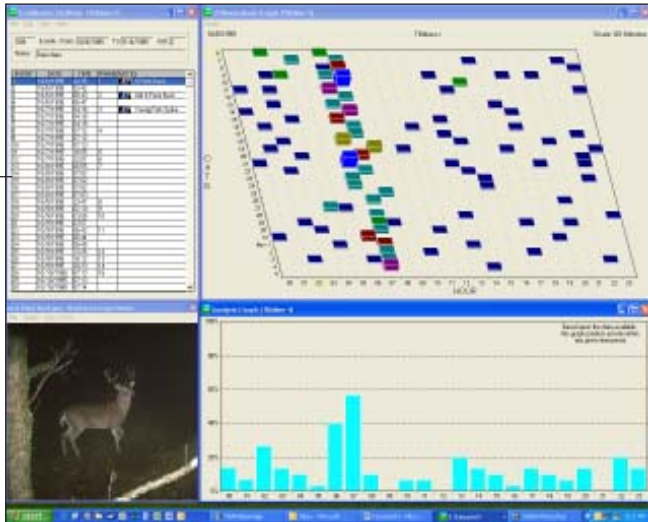
When the TM DATA COLLECTOR II is used in conjunction with the TM STATPACK, you will be able to print out a hard copy of your data, as well as produce a 2-dimensional or 3-dimensional bar graph of the time and date information. The information can be graphed in 15, 30 or 60 minute time intervals. Patterns of animal movement are very easy to see using this method.

The NEW! TM STATPACK ver. 2004.1214.69 allows you to link photographs to event data for unsurpassed animal census and identification. With the NEW! Catalog Function, importing new data from the TM DATA COLLECTOR II is an easy-to-do procedure from your computer keyboard.

The TM STATPACK Software can also be used to analyze data from individual TRAILMASTER monitors without having the TM DATA COLLECTOR II. Each monitor must be carried from the field and cabled directly to the computer for print-out or graph.



NEW! Menu-driven Operation Screen available when TM StatPack Software ver.69 and higher are used with TM DataCollector II



COMPUTER SCREEN:
 Shows event listing*,
 3-D bar-graph, analysis graph
 and photograph tied to event.

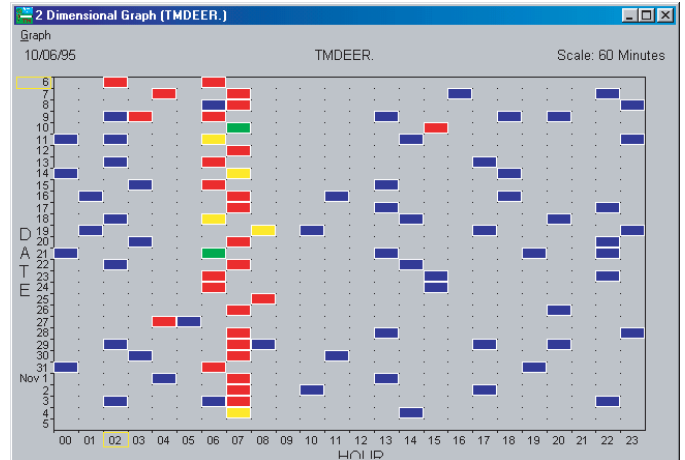
File Edit View Help

Events From: 10/6/1995 To: 11/4/1995 Unit: 2

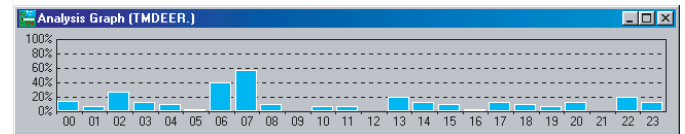
Notes: Deer data

EVENT	DATE	TIME	FRAME NOTES
1	10/6/1995	02:26	8 Point Buck
2	10/6/1995	02:42	
3	10/6/1995	06:43	Old E Point Buck
4	10/6/1995	06:47	
5	10/7/1995	04:18	3 Young Fawn Spike
6	10/7/1995	04:18	
7	10/7/1995	04:18	
8	10/7/1995	07:12	
9	10/7/1995	07:12	
10	10/7/1995	07:12	
11	10/7/1995	16:56	
12	10/7/1995	22:00	
13	10/8/1995	06:56	
14	10/8/1995	07:02	
15	10/8/1995	07:02	
16	10/8/1995	07:02	

*CLOSE-UP of EVENT LISTING



2-dimensional bar graph of deer data



2-dimensional bar graph analysis of deer data

Summary Report - 1 New

Report Date: 10/26/2000

Program: 00

Location: South Field

Unit: 100/1000

DATE	TIME	EVENTS
10/6/1995	02:26	1
10/6/1995	06:43	1
10/6/1995	06:47	1
10/7/1995	04:18	3
10/7/1995	07:12	1
10/7/1995	16:56	1
10/7/1995	22:00	1
10/8/1995	06:56	1
10/8/1995	07:02	1
10/8/1995	07:02	1
10/8/1995	07:02	1

Summary Report - Can be viewed in 15-min, 30-min, 60-min, Daily, and Weekly periods.

FOR A FREE CATALOG or
ORDER 1-800-544-5415